

●PP Corrugated Sheet



ADVERTISING BOARD PACKAGING BOARD

TURNOVER BOX DECORATIVE & BUILDING MATERIALS

PRODUCT INTRODUCTION



ZIBO HONGWEI PLASTIC CO.,LTD.

WANGNIANG COMMUNITY,ZICHUAN ECONOMIC DEVELOPMENT ZONE,

ZIBO CITY,SHANDONG PROVINCE,P.R.CHINA.

CATALOGS

I . Company Profile	-----(1)
II . PP Corrugated Sheet	-----(2)
III. Applications	-----(3)
IV. Product Advantages	-----(4)
V . The Factory Scene	-----(5)
VI. Business Case	-----(6)
VII. Qualification & Certification	-----(9)
VIII. Domestic and foreign markets	-----(13)
IX. Contact Information	-----(15)

I . Company Profile

Zibo Hongwei Plastic Co., Ltd (formerly, Kelida Corporation) has more than 20 years of production history in the plastic industry.

We produce and export:

- (1)PP Corrugated Sheet
- (2)Corrugated Plastic Packaging
- (3)PP Plastic Formwork
- (4)PVC Form Board
- (5)Other plastic related products



Our company have 8 Italy imported advanced production lines, powerful technical force and complete inspection system. Total production capacity **20,000 tons** per year. Company and products passed the **CIC, SGS, CNAS** certification etc. Especially in the area, our company participated in making and revising National and Industrial Standards .



Products are exported to USA, CA, Germany, Brazil, Japan ,Korea, Australia, Pakistan and other more than 30 countries. We are sure to provide you with high quality products and services, and sincerely cooperate with you.

II. PP Corrugated Sheet

Specifications and Recommended GSM for Regular Use



GSM Usage (g/m2) SIZE	Wall and ground protection, tree guard etc.	Advertising board, printing board	Used for making boxes	Clapboard, backing board, lining board	Customization
2mm	245-400	400-450	400-500	●	●
3mm	260-500	500-600	550-650	550-800	●
4mm	600-850	700-800	750-850	750-1200	●
5mm	●	800-950	850-1000	850-1500	●
6mm	●	950-1200	1000-1200	1000-1800	●
7mm	●	1100-1400	●	●	●
8mm	●	1250-1500	●	●	●
9mm	●	●	●	●	●
10mm	●	●	●	●	●
Remark: (1) Anti - aging, flame retardant, anti - static characteristics can be customized. (2) "●" This symbol represents customizable.					

III. Applications

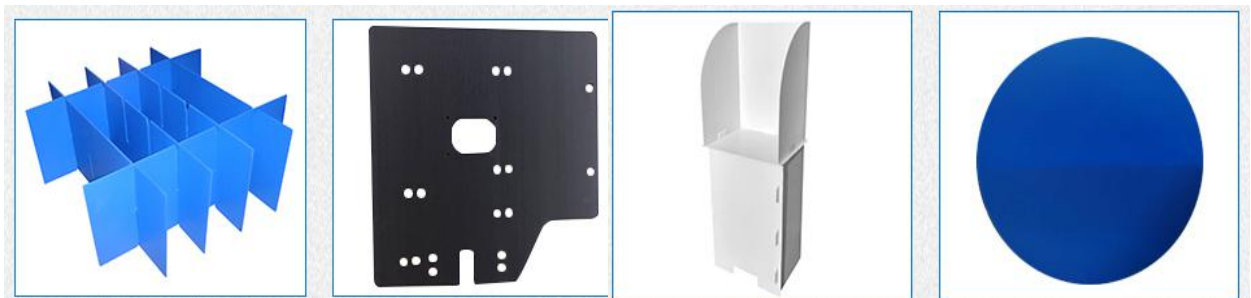
●Advertising and printing



●Turnover Boxes and Fruit Vegetable Boxes

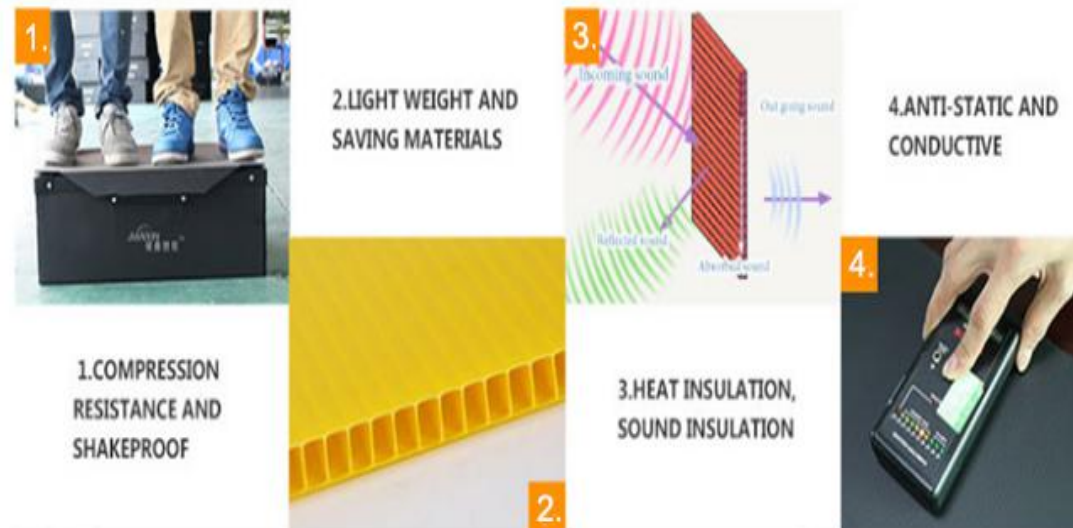


●Other Products: Clapboard, backing board, lining board etc.

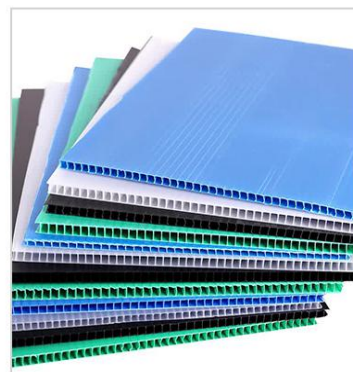


IV. Product Advantages

●Advantages:



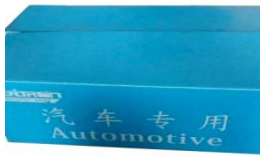




V. The Factory Scene



VI. Business Cases

● Representative Customers

Sequence number	Company Name	Supply Products
1.	China Weichai Group Shanqi Heavy Truck 	PP Turnover Box for Parts 
2.	Korea Hyundai Motor Company 	Subplate (pp) 
3.	Japan Suzuki Automobile 	Car Boot PP backing plate 
4.	Italy Bitron Industry (China) 	PP Turnover Box for Auto Parts 
5.	Pakistan National Election 	Ballot boxes 
.....	

● Ordinary Business Case of PP Turnover Boxes

(1) USA, UK and Germany Fresh Vegetables and Fruits Boxes



(2) Korea Beverage Packing



(3) Bottle Pedestal Plate



(4) Walnut Beverage, Beer and White wine Packing



VII. Qualification & Certification





Test Report

No. TSNEC1900213301

Date: 21 Feb 2019

Page 1 of 5

ZIBO HONGWEI PLASTIC CO.,LTD

WANGNIANG COMMUNITY, ZICHUAN ECONOMIC DEVELOPMENT ZONE, ZIBO CITY, SHANDONG PROVINCE

The following sample(s) was/were submitted and identified on behalf of the clients as : PLASTIC HOLLOW BOARD

SGS Job No. : TP19-000989 - TJ

Date of Sample Received : 18 Feb 2019

Testing Period : 18 Feb 2019 - 20 Feb 2019

Test Requested : Selected test(s) as requested by client.

Test Method : Please refer to next page(s).

Test Results : Please refer to next page(s).

Conclusion : Based on the performed tests on submitted sample(s), the results of Lead, Mercury, Cadmium, Hexavalent chromium, Polybrominated biphenyls (PBBs), Polybrominated diphenyl ethers (PBDEs) and Phthalates such as Bis(2-ethylhexyl) phthalate (DEHP) , Butyl benzyl phthalate (BBP), Dibutyl phthalate (DBP) , and Diisobutyl phthalate (DIBP) comply with the limits as set by RoHS Directive (EU) 2015/863 amending Annex II to Directive 2011/65/EU.

Signed for and on behalf of
SGS-CSTC Standards Technical Services (Tianjin) Co., Ltd.

Reabeca Zhou
Approved Signatory



Unless otherwise agreed in writing, this document is issued by the Company subject to its General Conditions of Service printed overleaf, available on request or accessible at <http://www.sgs.com/en/Terms-and-Conditions.aspx> and, for electronic format documents, subject to Terms and Conditions for Electronic Documents at <http://www.sgs.com/en/Terms-and-Conditions/Terms-e-Documents.aspx>. Attention is drawn to the limitation of liability, indemnification and jurisdiction issues defined therein. Any holder of this document is advised that information contained hereon reflects the Company's findings at the time of its intervention only and within the limits of Client's instructions, if any. The Company's sole responsibility is to its Client and this document does not exonerate parties to a transaction from exercising all their rights and obligations under the transaction documents. This document cannot be reproduced except in full, without prior written approval of the Company. Any unauthorized alteration, forgery or falsification of the content or appearance of this document is unlawful and offenders may be prosecuted to the fullest extent of the law. Unless otherwise stated the results shown in this test report refer only to the sample(s) tested.

Attention: To check the authenticity of testing / inspection report & certificate, please contact us at telephone: (86-755) 8307 1443, or email: CN.Doccheck@sgs.com

SGS-CSTC Standards Technical Services (Tianjin) Co., Ltd.
Chemical Laboratory

SGS Mansion, No.41, The 5th Avenue TEDA, Tianjin, China 300457 t (86-22) 65288000 f (86-22) 25295252 www.sgs.com.cn
中国·天津经济技术开发区第五大街41号SGS大厦 邮编: 300457 t (86-22) 65288000 f (86-22) 25295252 e sgs.china@sgs.com

Member of the SGS Group (SGS SA)



Test Report

No. TSNEC1900213301

Date: 21 Feb 2019

Page 2 of 5

Test Results :

Test Part Description :

Specimen No.	SGS Sample ID	Description
SN1	TSN19-002133.001	white plastic board

Remarks :

- (1) 1 mg/kg = 0.0001%
- (2) MDL = Method Detection Limit
- (3) ND = Not Detected (< MDL)
- (4) "-" = Not Regulated

RoHS Directive (EU) 2015/863 amending Annex II to Directive 2011/65/EU

Test Method : With reference to IEC 62321-5:2013, IEC 62321-4:2013+AMD1:2017, IEC 62321-7-2:2017, IEC 62321-6:2015 and IEC 62321-8:2017, analyzed by ICP-OES, UV-Vis and GC-MS.

Test Item(s)	Limit	Unit	MDL	001
Cadmium (Cd)	100	mg/kg	2	ND
Lead (Pb)	1000	mg/kg	2	ND
Mercury (Hg)	1000	mg/kg	2	ND
Hexavalent Chromium (Cr(VI))	1000	mg/kg	8	ND
Sum of PBBs	1000	mg/kg	-	ND
Monobromobiphenyl	-	mg/kg	5	ND
Dibromobiphenyl	-	mg/kg	5	ND
Tribromobiphenyl	-	mg/kg	5	ND
Tetrabromobiphenyl	-	mg/kg	5	ND
Pentabromobiphenyl	-	mg/kg	5	ND
Hexabromobiphenyl	-	mg/kg	5	ND
Heptabromobiphenyl	-	mg/kg	5	ND
Octabromobiphenyl	-	mg/kg	5	ND
Nonabromobiphenyl	-	mg/kg	5	ND
Decabromobiphenyl	-	mg/kg	5	ND
Sum of PBDEs	1000	mg/kg	-	ND
Monobromodiphenyl ether	-	mg/kg	5	ND
Dibromodiphenyl ether	-	mg/kg	5	ND
Tribromodiphenyl ether	-	mg/kg	5	ND
Tetrabromodiphenyl ether	-	mg/kg	5	ND



Unless otherwise agreed in writing, this document is issued by the Company subject to its General Conditions of Service printed overleaf, available on request or accessible at <http://www.sgs.com/en/Terms-and-Conditions.aspx> and, for electronic format documents, subject to Terms and Conditions for Electronic Documents at <http://www.sgs.com/en/Terms-and-Conditions/Terms-e-Documents.aspx>. Attention is drawn to the limitation of liability, indemnification and jurisdiction issues defined therein. Any holder of this document is advised that information contained hereon reflects the Company's findings at the time of its intervention only and within the limits of Client's instructions, if any. The Company's sole responsibility is to its Client and this document does not exonerate parties to a transaction from exercising all their rights and obligations under the transaction documents. This document cannot be reproduced except in full, without prior written approval of the Company. Any unauthorized alteration, forgery or falsification of the content or appearance of this document is unlawful and offenders may be prosecuted to the fullest extent of the law. Unless otherwise stated the results shown in this test report refer only to the sample(s) tested.

Attention: To check the authenticity of testing / inspection report & certificate, please contact us at telephone: (86-755) 8397 1443, or email: CN.Doccheck@sgs.com

SGS-CSSTC (Shanghai) Technical Services (Tianjin) Co., Ltd.
Chemical Laboratory

SGS Mansion, No.41, The 5th Avenue TEDA, Tianjin, China 300457 t (86-22) 65288000 f (86-22) 25295252 www.sgsgroup.com.cn
中国·天津市经济技术开发区第五大街41号SGS大厦 邮编: 300457 t (86-22) 65288000 f (86-22) 25295252 e sgs.china@sgs.com

Member of the SGS Group (SGS SA)



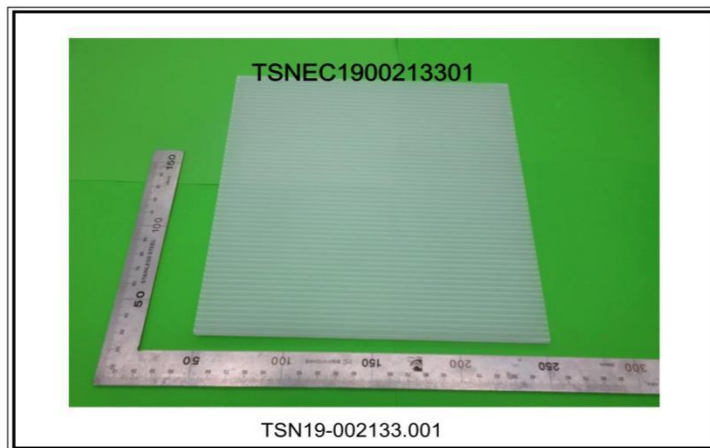
Test Report

No. TSNEC1900213301

Date: 21 Feb 2019

Page 5 of 5

Sample photo:



SGS authenticate the photo on original report only

*** End of Report ***



Unless otherwise agreed in writing, this document is issued by the Company subject to its General Conditions of Service printed overleaf, available on request or accessible at <http://www.sgs.com/en/Terms-and-Conditions.aspx> and, for electronic format documents, subject to Terms and Conditions for Electronic Documents at <http://www.sgs.com/en/Terms-and-Conditions/Terms-e-Documents.aspx>. Attention is drawn to the limitation of liability, indemnification and jurisdiction issues defined therein. Any holder of this document is advised that information contained hereon reflects the Company's findings at the time of its intervention only and within the limits of Client's instructions, if any. The Company's sole responsibility is to its Client and this document does not exonerate parties to a transaction from exercising all their rights and obligations under the transaction documents. This document cannot be reproduced except in full, without prior written approval of the Company. Any unauthorized alteration, forgery or falsification of the content or appearance of this document is unlawful and offenders may be prosecuted to the fullest extent of the law. Unless otherwise stated the results shown in this test report refer only to the sample(s) tested.

Attention: To check the authenticity of testing / inspection report & certificate, please contact us at telephone: (86-755) 8307 1443, or email: CN.Doccheck@sgs.com

SGS-CSTC Inspection & Testing Services (Tianjin) Co., Ltd.
Chemical Laboratory

SGS Mansion, No.41, The 5th Avenue TEDA, Tianjin, China 300457 t (86-22) 65288000 f (86-22) 25295252 www.sgsgroup.com.cn
中国·天津市经济技术开发区第五大街41号SGS大厦 邮编: 300457 t (86-22) 65288000 f (86-22) 25295252 e sgs.china@sgs.com

Member of the SGS Group (SGS SA)

VIII. Domestic and foreign markets

Annual sales of Hongwei Company \$30,000,000, and more than 300 customers. The marketing including 55% in China and 45% abroad. Products are exported to USA, Germany ,CA , Australia, Pakistan etc more than 30 countries.

● Domestic Markets



● Major International Markets



● Customer visit



IX. Contact Information

THE BEST RELATIONSHIP

BETWEEN BUSINESS COOPERATION & FRIENDSHIP



Company: ZIBO HONGWEI PLASTIC CO.,LTD.

Address: WANGNIANG COMMUNITY, ZICHUAN ECONOMIC
DEVELOPMENT ZONE, ZIBO, SHANDONG, CHINA.



Contact : Alena Hu

Tel: +86 0 533 3160580

Email: alena@zbhwplastic.com

Mobile: +86 15853378382

Website: www.zbhwplastic.com